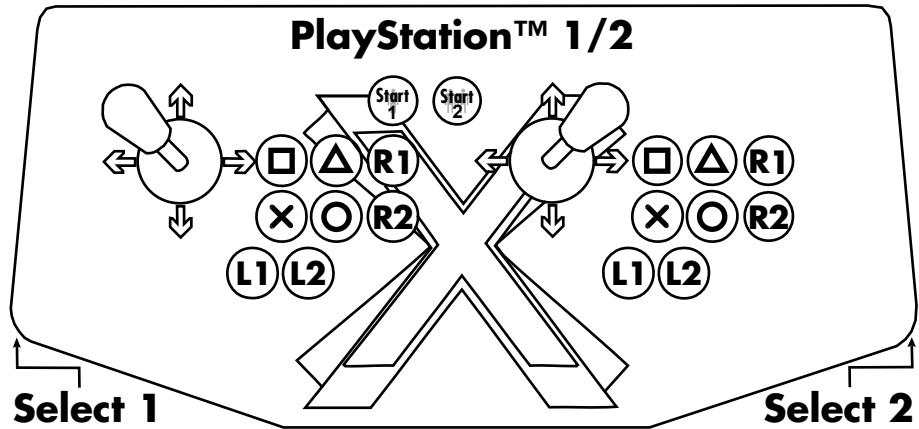
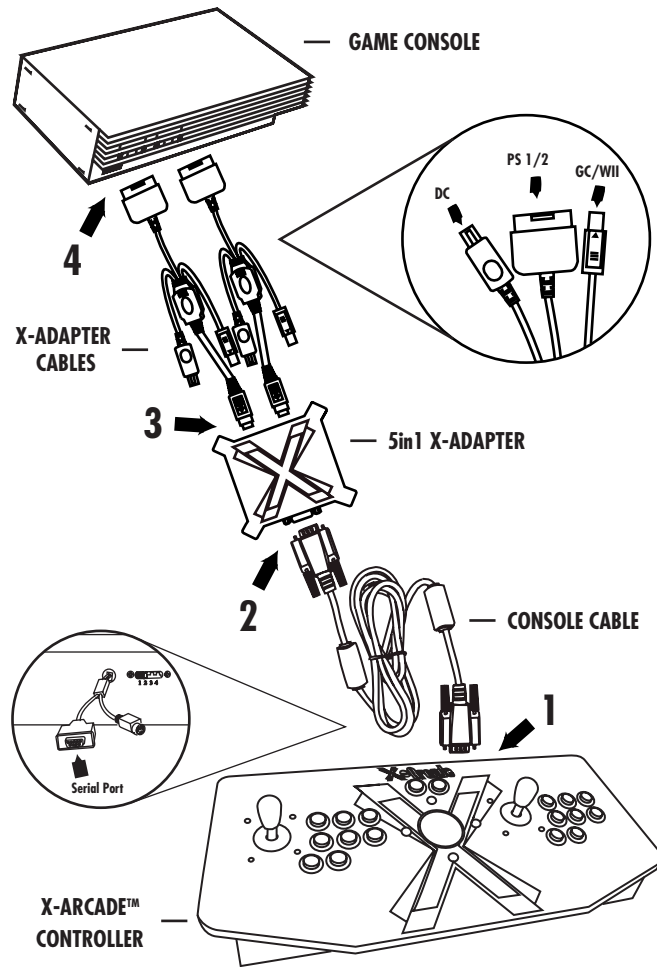


X-Arcade

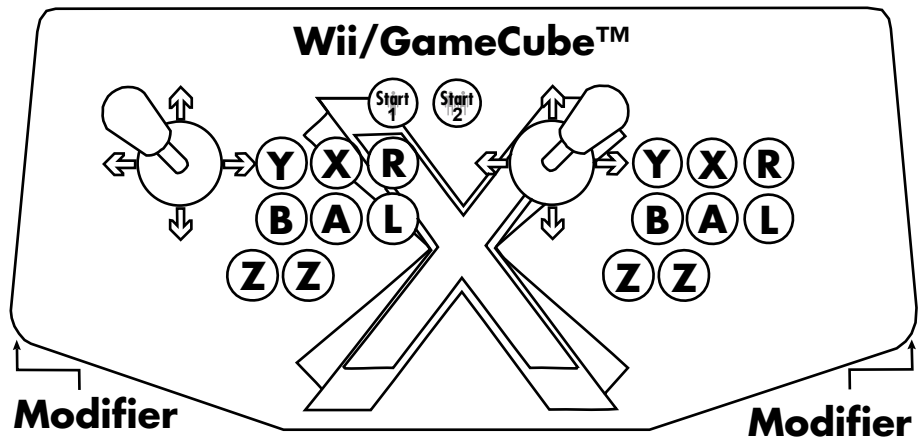
5IN1 X-ADAPTER

WARNING: DO NOT plug the 5in1 X-Adapter into more than one console at a time. Doing so may damage the X-Adapter.

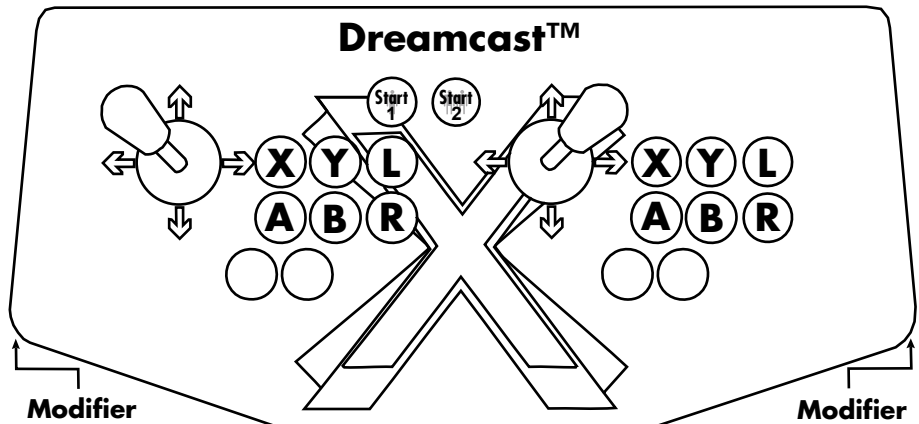
- 1) Plug the Console Cable into the Serial Port on the X-Arcade™.
- 2) Plug the other end of the Console Cable into Serial Port on the 5in1 X-adapter.
- 3) Connect one end of X-Adapter Cables into the 5in1 X-Adapter (only the P1 side needed for Solo).
- 4) Connect other end of X-Adapter Cables into your game console's controller ports. (Only the 'P1' side is used for Solo)
- 5) Power on game console, red LED should light on X-Arcade™.
- 6) PLAY!



- Select 1** **Select 2**
- Select + □ = D-PAD (default)
 - Select + △ = Analog 1 (Left Thumbstick)
 - Select + R1 = Analog 2 (Right Thumbstick)
 - Select + Start = True Digital Mode (PSX)
 - Select + R2 = DualStick Mode* (Single Player)
 - Select + L1 = Slow Sensitivity for Analog 1
 - Select + L2 = Normal Sensitivity for Analog 1



- Modifier** **Modifier**
- Modifier + Y = D-PAD (default)
 - Modifier + X = Analog 1 (Left Thumbstick)
 - Modifier + R = Analog 2 (Right Thumbstick)
 - Modifier + Start = Toggles analog switches for R & L buttons (default on)
 - Modifier + Left Z button = Slow Sensitivity for Analog 1
 - Modifier + Right Z button = Normal Sensitivity for Analog 1
 - Modifier + L = DualStick Mode* (Single Player)



Modifier Toggles Between D-PAD and Analog Control

A standard gamepad controller has 2 Analog Thumbstick controls, and 1 Digital D-PAD control, the X-Arcade™ can easily emulate any of them. In some games you will access menus with the D-PAD, but play the game with the Analog control. Simply hold the Select button on the side and press the appropriate button listed below to switch between them at any time during gameplay. The left Select is for player 1, the right one is for player 2.

*DualStick Mode is for single-player play, and allows the right joystick to act as Analog 2 and the P2 side buttons mirror P1.