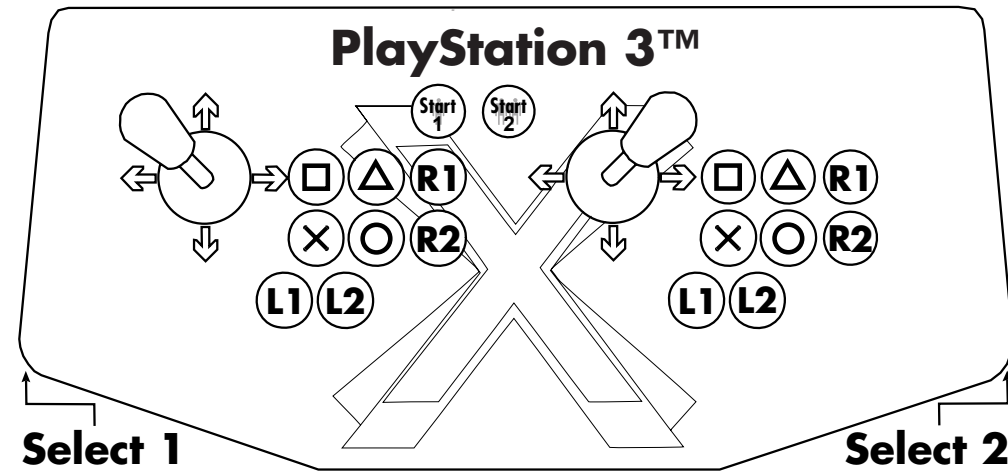
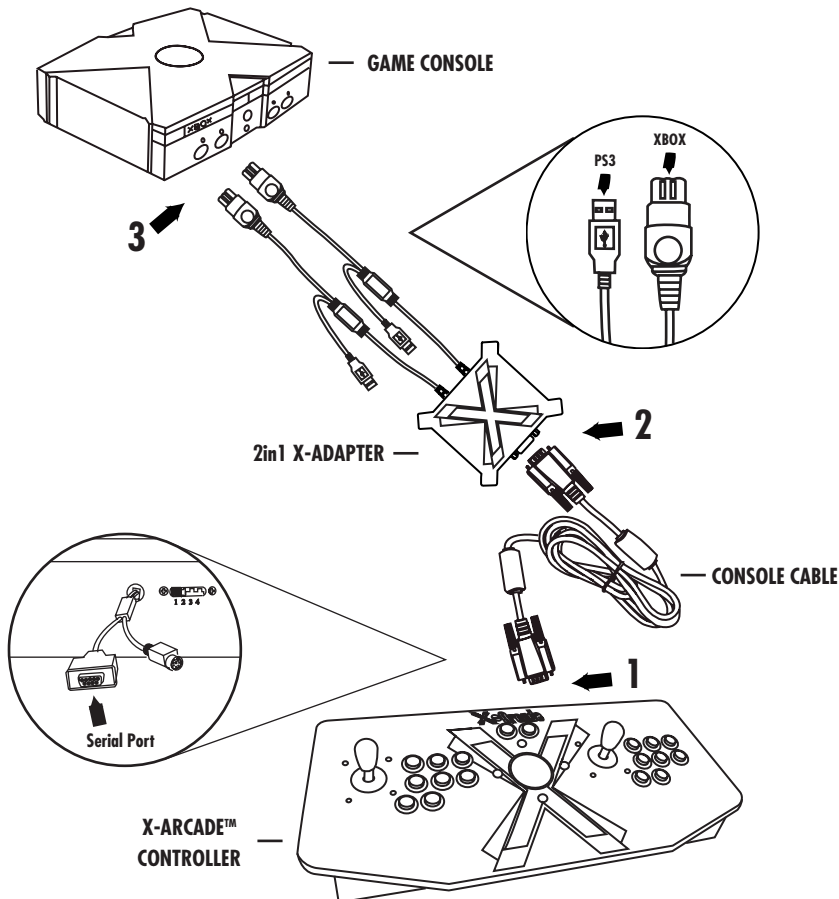


X-Arcade

2IN1 X-ADAPTER

WARNING: DO NOT plug the 2in1 X-Adapter into more than one console at a time. Doing so may damage the X-Adapter.

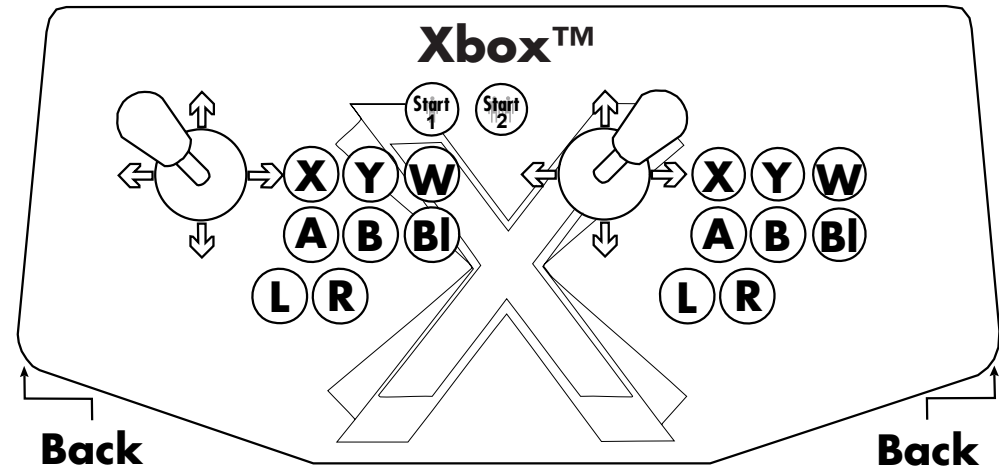
- 1) Plug the Console Cable into the Serial Port on the X-Arcade™.
- 2) Plug the other end of the Console Cable into Serial Port on the 2in1 X-adapter.
- 3) Connect the other end of the 2in1 X-Adapter into your game console's respective player controller ports. (Only the 'P1' side is used for the Solo™ controller)
- 4) Power on the game console, a red LED should light on the X-Arcade™.
- 5) PlayStation 3 only: LEDs will be blinking, press Select+Start to initialize, lights will change to color signifying assigned player number.
- 6) PLAY!



PS3 Player LEDs:

- 1 = Blue
- 2 = Red
- 3 = Orange
- 4 = Green
- 5 = Green+Blue
- 6 = Green+Red
- 7 = Green+Orange

- Select + □ = D-PAD (default)**
- Select + △ = Analog 1 (Left Thumbstick)**
- Select + R1 = Analog 2 (Right Thumbstick)**
- Select + Start = PS Button**
- Select + R2 = DualStick Mode (Single Player)**
- Select + L1 = Half-Tilt Sensitivity for Analog 1**
- Select + L2 = Full-Tilt Sensitivity for Analog 1 (Default)**



- Back + X = D-PAD (default)**
- Back + Y = Analog 1 (Left Analog Thumbstick)**
- Back + W = Analog 2 (Right Analog Thumbstick)**
- Back + BI = DualStick Mode (Single Player)**
- Back + L = Half-Tilt Sensitivity for Analog 1**
- Back + R = Full-Tilt Sensitivity for Analog 1 (Default)**

A standard gamepad controller has 2 Analog Thumbstick controls, and 1 Digital D-PAD control, the X-Arcade™ can easily emulate any of them. In some games you will access menus with the D-PAD, but play the game with the Analog control. Simply hold the Select button on the side and press the appropriate button listed below to switch between them at any time during gameplay. The left Select is for player 1, the right one is for player 2.

DualStick Mode is for single-player play, and allows the right joystick to act as Analog 2 and the P2 side buttons mirror P1.